

GEKKO®

FLOORING ADHESIVES

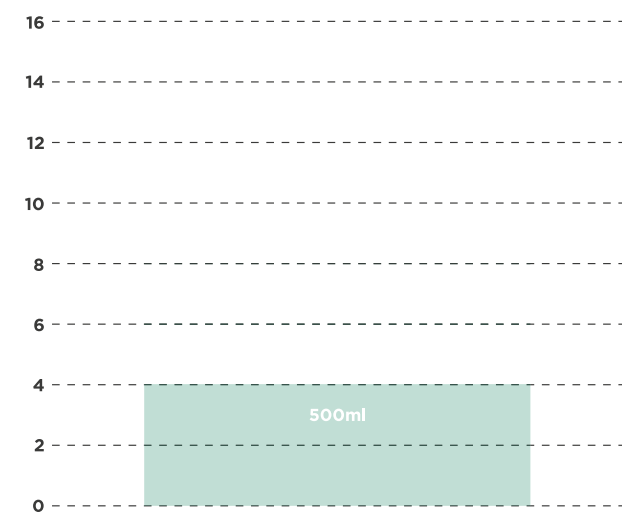
G25

NON CHLORINATED PREMIUM CARPET SPRAY

- Dichloromethane Free Non-Chlorinated Formulation.
- Quick Drying.
- Low Odour
- Ideal for the fast and easy installation of most textile floor coverings.
- Carpets, Underlay, Carpet Tiles, Foam and Fabrics



TECHNICAL DATA



	500ml
Single-sided	4m ²
Double-sided	n/a

APPLICATION TYPE:

Single-sided

FLASH OFF TIME**:

1 min

OPEN TIME**:

30 mins

COLOUR:

Clear/White

ADHESIVE TYPE:

SBR

TYPE:



500ml

TIP:



Fixed

SPRAY TYPE:



Web

*consult the Spray Manual for a more detailed tutorial on the bonding process.
**depending on environment & ambient temperature.

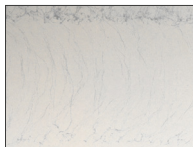
CHEMICAL TECHNICAL DATA

Colour	Clear/White
System Flammability	N/A
Flash-off Time	1 min depending on atmospheric conditions
Open Time	30 mins
Temperature Resistance	N/A
SHELF LIFE	12 months from date of manufacture

HANDLING & STORAGE

- Consult Safety Data Sheet prior to use.
- DO NOT store at temperatures over 50°C.
- Avoid exposure to direct sunlight.
- For optimum performance, store at 18°C during use, but must always be above 10°C.
- DO NOT ALLOW THE PRODUCT TO FREEZE
- DO NOT store directly on concrete floor.
- Shake well before use.
- For Full Handling and Storage details Consult Material Safety Data Sheet Section 7.
- To prevent a blockage in the spray nozzle, after use turn the can upside down and press the nozzle until adhesive spray is cleared.
- Replace the cap after use to protect the valve.
- Do not use in confined spaces without adequate ventilation and/or respirator.
- For Full PPE Information Consult Safety Data Sheet Section 8.
- Always test product to determine suitability for your

COVERAGE



LIGHT COVERAGE



HIGH COVERAGE = 20 dry gms/sq

DIRECTIONS FOR USE

This product is designed to be applied as a single sided bonding system applied directly to the subfloor. Prior to use, check compatibility. Spray a small test patch of the adhesive on the substrate. This product may degrade some substrates.

Before bonding ensure that surfaces are clean, dry and free from dirt, dust, oil, loose paint, wax or grease, etc. For best results, the temperature of the adhesive and the surfaces being bonded should be between 16°C - 27°C.

Use this product with correct PPE and with adequate ventilation.

SHAKE WELL BEFORE USE.

Spray approximately 4" - 8" away at a 45-60 degree angle to the surface, applying a uniform coat of adhesive to obtain a good coverage of the surface.

Adhere surfaces and press together with adequate pressure. Allow 24 hours for the adhesive to fully cure.

Use Gekko G92 or G93 solvent cleaners to remove any over spray.

After use to prevent a blockage in the spray nozzle, turn the can upside down and press the nozzle until adhesive spray is cleared. Replace the cap after use to protect the valve.

Store according to the material safety data.

SUBSTRATES

G25	Dichloromethane Free	Synthetic Grass	Wall Cladding	Sheet Vinyl	Vinyl Tile	Cushion Vinyl (Naked Back)	Cushion Vinyl (Felt Back)	PVC Profiles	Carpet - Gel Backed	Carpet - Synthetic Backed	Fibre Bond Carpets	Carpet Tiles
	●								●	●	●	●

SUBFLOORS

PU Underlay	Rubber Crumb Underlay	Rubber Underlay	Rubber Floorcoverings	Linoleum (Marmoleum)	Stair Nosings	Carpet Gripper	Flooring Grade Ply	Hardboard	Chipboard	OSB Board	Concrete	Sand & Cement	Ceramic	EPS
							●	●	●	●	●	●		